



# **Austrics 22.1.7**

## **Release Notes**



# TABLE OF CONTENTS

## Contents

INTRODUCTION.....	3
UPDATES / IMPROVEMENTS.....	3
<b>PLAN</b> .....	3
AM-5140 – Network Planner not updating same Node Pairs.....	3
<b>FLEET</b> .....	3
AM-5103 - Zig Zag graph table sizing.....	3
AM-5020 – EV Vehicle Optimisation – Charging Activities .....	3
AM-4999 – Trip Editor file locking .....	3
AM-4947 – Trip editor repositioning freeze .....	4
AM-4914 – PVR report output .....	4
<b>CREW</b> .....	4
AM-5460 – Duty Schedule & Schedule breakdown statistics .....	4
AM-5001 – Matopt Stats – Incorrect Default File name displaying.....	5
AM-5112 - .ralab files displaying in the drop down list .....	5
AM-5096 – Variable days tool - Matcru loop.....	5
AM-5066 – Error on Opening Vehicle Schedule .....	6
AM-5094 - Shift Optimisation – Cmax Constraint Table Validation.....	6
AM-5075 – Schedule breakdown stats – Buffer overflow .....	6
<b>ROSTER</b> .....	6
AM-5064 – Roster Printing Error .....	6
AM-4965- Roster shift types .....	7
AM-4946 – Roster tool freeze.....	7
<b>Data Exports</b> .....	7
AM-5135 – TransXchange .....	7
RELEASE NOTES:.....	7

## INTRODUCTION

Austrics v22.1.7 provides a range of new features, system enhancements and improvements to existing functionality.

This is our latest A22.1 intermediate release which was available to clients since June 2022.

So, what else has changed in this release?

## UPDATES / IMPROVEMENTS

Numerous updates and improvements to existing functionality are included in this release. These items have been broken down into the relevant Austrics module below:

### PLAN

AM-5140 – Network Planner not updating same Node Pairs

When adjusting a node pair in the 'Node Pair' tab it is not always refreshing/implementing the change. This has been resolved in this release.

### FLEET

AM-5103 - Zig Zag graph table sizing

Tables at the top of the zig zag graph have been resized to their historical position to allow more space for the zig zag table below.

AM-5020 – EV Vehicle Optimisation – Charging Activities

Automatically created charging activities not displaying after the optimisation. This has now been rectified.

AM-4999 – Trip Editor file locking

Improvement made to the file un-locking on the exit of the Trip Editor.

AM-4947 – Trip editor repositioning freeze

Change made to improve the speed in which repositioning data can be loaded.

AM-4914 – PVR report output

Report was not producing any output for the user, resolved in this release.

CREW

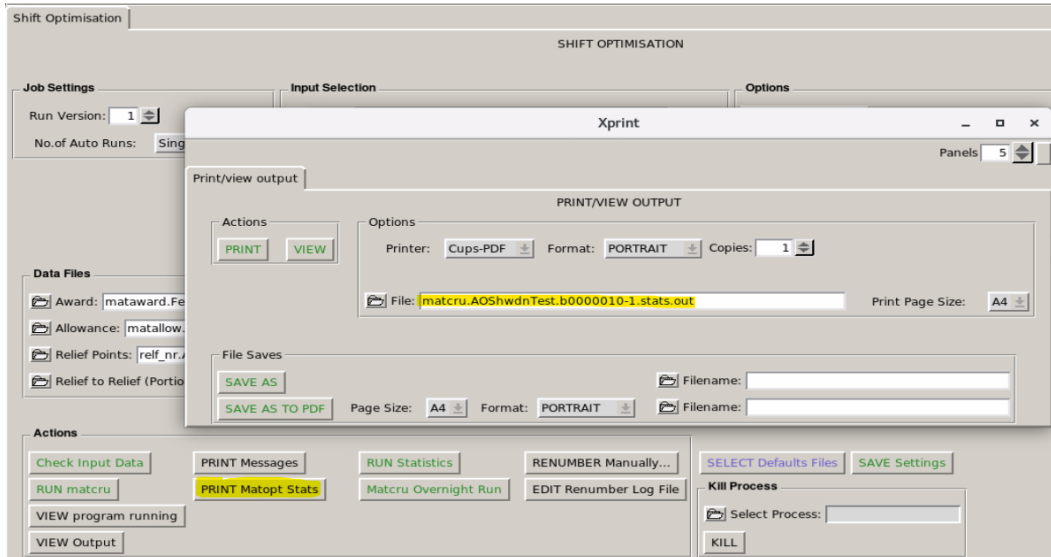
AM-5460 – Duty Schedule & Schedule breakdown statistics

Missing decimal point in three of the output columns has been rectified.

Route: 211				02/11/2019									TS no. 99												
Duty	Run	Route	Departure				Arrival				Pr	TT	Meal			Times						Allowances			
			Sign On	Dep Gar	On Place	On Time	Off Time	Off Place	Arr Gar	Sign Off			St	Start	End	Relief	TOD	Spread	Paid Time	Drive Time	Time on Bus	Portion	Spread Over	Unsoc Hours	
1	SW001	211	0429	0439	SW	0439	0804	VCSNVS					0804					8.10			2.47	3.25	3.35		
	SW010	211			VCSNVS	0924	1215	VCSNVS		1239		19		0924	1.20	6.50				2.26	2.51	3.15			
2	SW004	211	0444	0454	SW	0454	0743	VCSNTP					0743					7.35			2.23	2.49	2.59		
	SW008	211			VCSNVS	0904	1155	VCSNVS		1219		19		0904	1.21	6.14				2.26	2.51	3.15			
3	SW013	211	0454	0504	SW	0504	0954	VCSNVS					0954					8.18			4.01	4.50	5.00		
	SW002	211			VCSNVS	1055	1248	VCSNTP		1312		19		1055	1.01	7.17				1.39	1.53	2.17			
4	SW006	211	0459	0509	SW	0509	1039	VCSNTP					1039					9.03			4.45	5.30	5.40		
	SW007	211			VCSNVS	1145	1338	VCSNTP		1402		19		1145	1.06	7.57				1.39	1.53	2.17			
5	SW014	211	0509	0519	SW	0519	1004	VCSNVS					1004					9.09			4.04	4.45	4.55		
	SW003	211			VCSNVS	1105	1354	VCSNVS		1418		19		1105	1.01	8.08				2.20	2.49	3.13			
6	SW010	211	0514	0524	SW	0524	0924	VCSNVS					0924					7.28			3.27	4.00	4.10		
	SW016	211			VCSNVS	1025	1218	VCSNTP		1242		19		1025	1.01	6.27				1.38	1.53	2.17			
7	SW016	211	0519	0529	SW	0529	1025	VCSNVS					1025					9.23			4.13	4.56	5.06		
	SW011	211			VCSNTP	1128	1418	VCSNTP		1442		19		1128	1.03	8.20				2.25	2.50	3.14			
8	SW002	211	0539	0549	SW	0549	1055	VCSNVS					1055					9.27			4.22	5.06	5.16		
	SW008	211			VCSNVS	1155	1442	VCSNVS		1506		19		1155	1.00	8.27				2.18	2.47	3.11			
9	SW008	211	0605	0615	SW	0615	0904	VCSNVS					0904					7.14			2.27	2.49	2.59		
	SW014	211			VCSNVS	1004	1255	VCSNVS		1319		19		1004	1.00	6.14				2.24	2.51	3.15			
10	SW003	211	0611	0621	SW	0621	1105	VCSNVS					1105					8.21			4.10	4.44	4.54		
	SW010	211			VCSNVS	1215	1408	VCSNTP		1432		19		1215	1.10	7.11				1.39	1.53	2.17			

### AM-5001 – Matopt Stats – Incorrect Default File name displaying

When selecting “PRINT Matopt Stats” from the Shift Optimisation screen, the default file name was configured incorrectly which resulted in no statistics displaying. This has been rectified.



### AM-5112 - .ralab files displaying in the drop down list

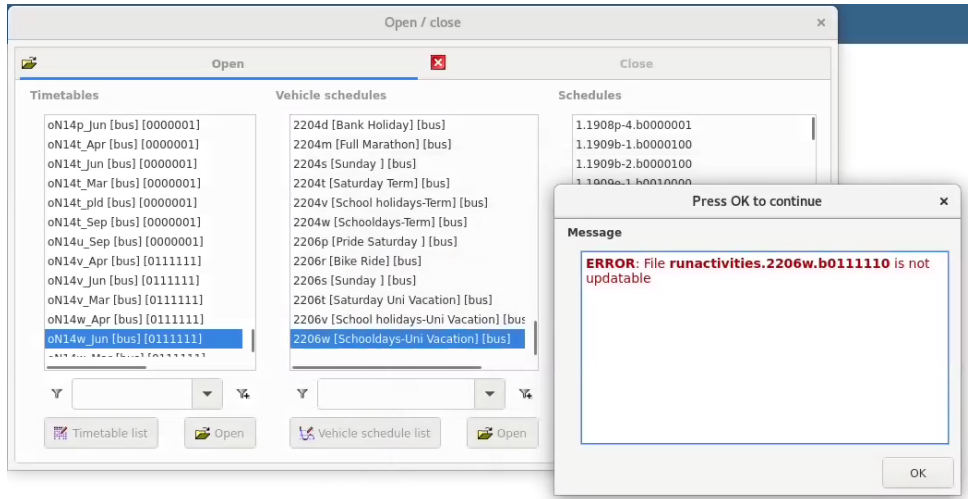
matcon.ralab & matopt.ralab files are now excluded from all drop down menus in the shift optimisation interface.

### AM-5096 – Variable days tool - Matcru loop

Improvements made to the optimisation programs to handle large complex 1000+ shift variable days jobs.

### AM-5066 – Error on Opening Vehicle Schedule

When opening a Vehicle Schedule, there were occasions where an incorrect error message appeared. This has been rectified



### AM-5094 - Shift Optimisation – Cmax Constraint Table Validation

Improvement made to the validation of the cmax constraint out of the depot.

### AM-5075 – Schedule breakdown stats – Buffer overflow

Change made to the program to stop any further occurrences of the 'Buffer overflow' error.

## ROSTER

### AM-5064 – Roster Printing Error

On a printed roster, Days Off after a period of Annual Leave was displaying incorrectly as Annual Leave. (Also occurred on Sick leave). This has been rectified.

The top screenshot shows a detailed view of a roster row. It has columns for 'Annual Leave Work' (with values 6413, 6018, 6424, 6424, 6048) and 'Day Off' (with values 38:00, 38:31). The bottom screenshot shows a simplified view of the same row, where the 'Annual Leave Work' columns are labeled 'AL' and the 'Day Off' columns are labeled 'Day Off'.

9	74332	AL	AL	AL	AL	AL	AL	Day Off	Day Off
---	-------	----	----	----	----	----	----	---------	---------

#### AM-4965- Roster shift types

Allowing the ability to have multiple shift classes assigned to a single shift type

#### AM-4946 – Roster tool freeze

Roster freezing when existing Roster is open and a new one is created & opened over the top.  
Rectified in the latest release.

### Data Exports

#### AM-5135 – TransXchange

Change made to the TransXchange export to not include any data which is not valid for the period. Previously the data included in the vlist file would be exported and included in the 'Days of non-operation'.

### **RELEASE NOTES:**

Online copies of all release notes are available at:

<https://releasenotes.trapezgroup.com.au/austrics/index.php>

For further information on any of the items in these notes, or if you have any questions or concerns regarding the Austrics software, please do not hesitate in sending an email to:

[support@trapezgroup.com.au](mailto:support@trapezgroup.com.au)